

# Ciphercon™ Mini-Purge

Fully Automated Hazardous Gas Cabinet

## Standard Configuration

- 1-cyl, [1-process]

## Standard Controls / Features

- PLC control of all critical functions
- Bright 7.5" color touch screen interface
- Proven auto-sequenced routines for all aspects of operations and maintenance
- User settable limits for all process and alarm parameters
- Exhaust pressure monitor
- On-screen warnings, alarms, prompting and instructions
- Emergency Off (EMO)
- EMO and EGO inputs
- Hazard & Process Alarm outputs
- Multi-level password protection
- Diagnostics screen
- Valve cycle count screen
- Z-Purge ready for Class I Div II compliance

The Ciphercon™ *Mini-Purge* Gas Cabinet is a re-packaged wall-mount version of the widely successful full-size 1500. This miniature fully automated gas cab boasts all of the same features, component quality, UHP construction and SAFETY of the Ciphercon™ 1500. Housing one process cylinder (up to 19"H x 8"D), the *Mini* utilizes time-proven PLC controlled auto-sequenced routines for all critical aspects of operations and maintenance. The bright 7.5" color touch screen intuitively guides the user through online operations, cylinder change-out, diagnostics and more.



Standard 1-cyl configuration with external purge

From the "Fab to the Lab," SDC puts first tier semiconductor grade safety and quality within reach. For less hazardous applications, be sure to see the FlexGas Mini-Purge semi-auto wall mount gas cabinet.

## Process Panel Features

- Ultra-High-Purity (UHP) 316L SS or VAR construction
- Surface finish 10 Ra avg. or better
- Springless diaphragm valves
- UHP process regulator
- Precision flow sensor
- Vacuum assisted purging
- UHP orbitally welded with strategic VCR® breaks
- Helium leak tested to  $1.0 \times 10^{-9}$  atm\*cc/s
- CLASS 100 / CLASS 10 clean room assembly and tested

## Dimensions\*

- 1 cyl. - 18"W x 36"H x 18"D

\* Height dimensions include controller. Add 6.0" to width with cylinder heating option.

## Codes and Standards Referenced

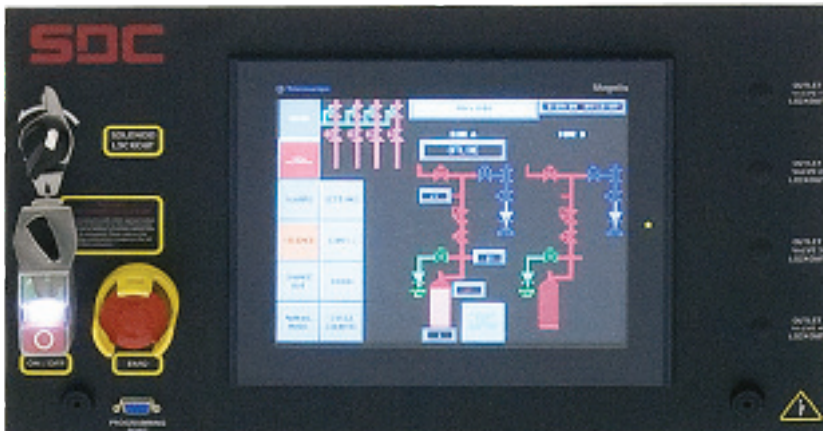
- ASME Section IX
- SEMI™ S2 Safety Guidelines for Semiconductor Manufacturing Equipment
- NFPA® 79, 496, 70 [NEC®]
- Factory Mutual®
- UL®
- CE®

# SDC

OEM discounts and private-labeling services available.

# Ciphercon™ Mini-Purge

## Fully Automated Hazardous Gas Cabinet



Large color touch screen interface (10.4" shown, 7.5" actual)

The Ciphercon™ *Mini-Purge* makes it simple to meet your exact gas delivery needs. Our Modular Design Concept allows for component-level replacement, ease of service and upgradeability. Start customizing right at the gas panel level with standard choices for regulator type, valve type, transducer ranges and purity level. Zero in further with a myriad of options like integrated scales, onboard gas leak detection, purgeable splitters, RFO, filtration, purification, and many more. SDC's SPEC ✓™ worksheet will walk you through this process in a simple, step-by-step manner. SDC Sales Engineers are always available to work through the customization process with you, either by phone,

### FACILITIES REQUIREMENTS

Pneumatic Supply	Adjustable to 90 psig	1 slm max.
Process Purge	Adjustable to 80 psig	30 slm max.
Vacuum Drive	Adjustable to 85 psig	85 slm max.
Process Vent	>1.0" WC	100 slm
Power	115V/3A	N/A
Sprinkler [if used]	30 psig	31 gpm
Exhaust*	>0.15" WC	200 scfm

\* Damper must be adjusted to meet 200 fpm face velocity as required by UFC

SDC, A Total Solutions Provider for Your Gas and Chemical Management Needs

1117 Kings Highway

Saugerties, NY 12477

Tel 845.246.3631

Fax 845.246.1595

www.stainlessdesign.com

SDC\_Ciphercon\_Mini\_Purge\_1