



FeraGas™ Heated Gas Cylinder Storage and Delivery Enclosures

Standard Features

- Eleven (11) gauge cold rolled steel body
- Houses 1 or 2 full size gas cylinders
- High quality, fully seam welded construction
- 1/4" diamond -plate hard-deck
- Self-closing, fully gasketed, triple-hinged doors
- Lockable safety latches on doors
- Unistrut® compatible interior mounting rails
- Seismic tie-down clearance holes for 5/8" bolts
- Cylinder clamps with tension straps
- Light gray, textured, ruggedized polyurethane finish

Standard Controls/Features

- Thermostat temperature control, heat only (30-120°F, 0-50°C)
- 200W
- Overtemp protection
- Temperature gauge
- Lockable power disconnect
- NEMA 4X controls enclosure

Dimensions

- 2-cyl.: 24"W x 72"H x 18"D
- 3-cyl.: 36"W x 72"H x 18"D
- 4-cyl.: 48"W x 72"H x 18"D

The FeraGas™ is a cylinder storage and gas delivery system

designed to maintain gas enclosure temperatures and prevent temperature swings that may affect your process chemicals. As temperatures dip to dew point and below, heavier gas components settle at the bottom of the cylinder, while the lighter components accumulate closer to the top. This separation or "stratification" is prevented by mediating the enclosure temperature. The FeraGas also protects against hydrocarbon dew point and condensation on the interior cylinder wall.

The standard FeraGas enclosure houses cylinders up to 61"H x 12"D. The controls enclosure located at the top of the gas cabinet houses the power disconnect, thermostat controls, temperature gauge and gas delivery pressure gauge (with gas



Heated, 2-cylinder enclosure

panel option). The gas cabinet enclosure utilizes cutting-edge reflective insulation technology to minimize BTU loss and keep cost of operation down.

FeraGas™ Heated Gas Cylinder Storage and Delivery Enclosure



FeraGas™ interior

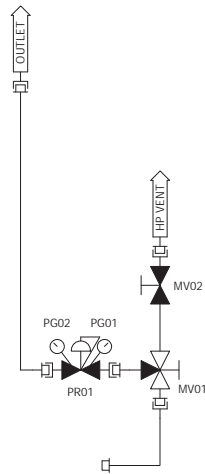
Process Gas Panels

- All 316L SS components
- UHP orbitally welded w/strategic VCR breaks
- Standard surface finish 20 Ra
- Helium leak tested to 1×10^9 atm cc/s
- CLASS 100/CLASS 10 clean room assembly and test



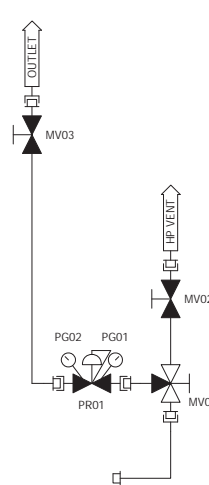
OEM discounts and private-labeling services available.

2- Valve



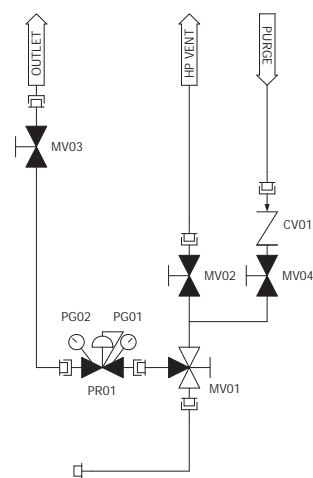
- Includes regulator, pre-regulator shutoff valve, high pressure vent valve

3-Valve



- Adds Process Outlet Isolation Valve [MVOX]

4-Valve



- Adds Purge Inlet Isolation Valve [MVOX]
- Adds Purge Inlet Check Valve [CVOX]

Gas Delivery Options

Process Gas Panel

- 2-valve gas panel
- 3-valve gas panel (includes OUTLET ISOLATION VALVE)
- 4-valve gas panel includes PURGE CIRCUIT)

Options

- Micro-Adjustable Cylinder Shelves
- Plumbing Backplanes
- Custom Cabinet Colors
- Custom Coating
- Custom Labeling and Logos

FACILITIES REQUIREMENTS

Power	110V/20A	N/A
Process Vent	>1.0" WC	100 slm
Sprinkler [if used]	30 psig	31 gpm

SDC, A Total Solutions Provider for Your Gas and Chemical Management Needs

1117 Kings Highway

Saugerties, NY 12477

Tel 845.246.3631

Fax 845.246.1595

www.stainlessdesign.com