



FlexGas™ Cylinder Gas Cabinet

Cylinder Cabinet Standard Configurations

- 1-cyl, [1-process]
 - 2-cyl [1-process, 1-purge]
 - 2-cyl [2-process]*
 - 3-cyl [3-process]*
 - 3-cyl [2-process, 1-purge]
- * Purge SideCar is an external, integrated purge cylinder

Gas Panel/Manifold Purity Standard Configurations

- UHP construction: orbitally welded/VCR® 316L SS or VIM/VAR
- UHP grade regulator (nontied diaphragm standard)
- UHP grade diaphragm valves (20 Ra standard)

HP Gas Panels Standard Configurations

- 3-Valve design [HP vent]
- 4-Valve design [adds PURGE]
- 6-Valve design [adds EVAC]

UHP Gas Panels Standard Configurations

- 25 Ra surface finish
- Dual stage regulators
- Outlet filters (0.003 um)
- DISS cylinder fittings

Industrial Gas Panels: Standard Configurations

- 3-Valve process gas panel [adds HP vent, 1-Valve is standard]

The FlexGas™ Gas Cabinet is designed to cover a wide range of cylinder gas delivery applications. In its simplest form, the FlexGas™ Gas Cabinet houses 1, 2, 3 or 4 gases, and includes a high purity, manual gas panel for each gas. Modular FlexGas™ Panels are available in 1, 2, 3, 4, 5 and 6-Valve designs for Process and Instrumentation Diagrams. Each panel may be tailored to the specific gas and application.

With the addition of the optional FlexPowr™ Controller, the FlexGas™ Cabinet can support a myriad of automated ALARM and panel SHUTDOWN options such as: Auto-Switchover, Excess Flow Sensors, Low Cylinder Pressure Alarms, High Delivery Pressure Alarms, Gas Leak Sensors, Scales and more! The FlexPowr™ Controller can support up to eight (8) user-settable alarm inputs and eight (8) user-settable alarm outputs. EMO slambutton and Exhaust Pressure Sensor are included with the FlexPower™ controller option.



2-Cylinder Model
w/ UHP Gas Panels and optional
FlexPowr™ Controller

Optional FlexPowr™ Controller

- Automatic shutdown of process gas panels
- Up to 8 user-definable alarms
- Up to 8 user-definable outputs
- Audible/visible alarm indication
- EMO button
- Multilevel password protection
- CLASS 100 / CLASS 10 clean room assembly and test

FlexPowr™ Control Components

- Exhaust pressure switch
- HI cylinder pressure switch
- HI delivery pressure switch
- Integrated gas leak detection
- UVIR detection
- Excess flow sensor

Other Equipment Options

- Adjustable cylinder shelves
- Restrictive flow orifices
- Cylinder scales
- CGA torque wrenches

Dimensions

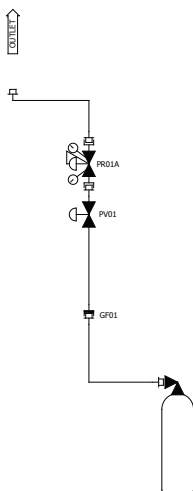
- 1-cyl: 18"W x 72"H x 19"D
- 2-cyl: 24"W x 72"H x 19"D
- 3-cyl: 36"W x 72"H x 19"D



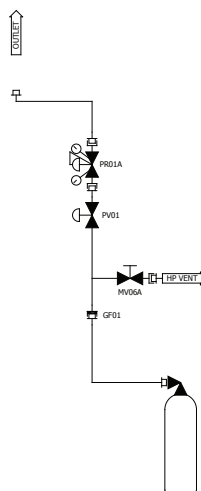
OEM discounts and private-labeling services available.

FlexGas™ Cylinder Gas Cabinet

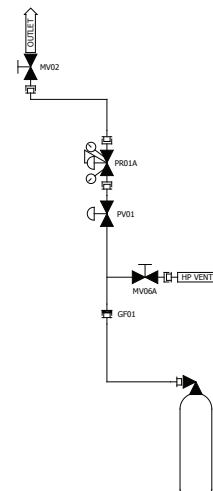
1-Valve



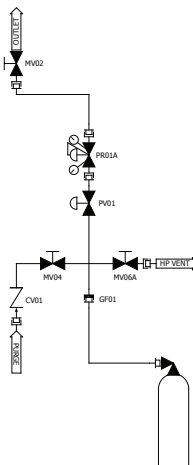
2-Valve



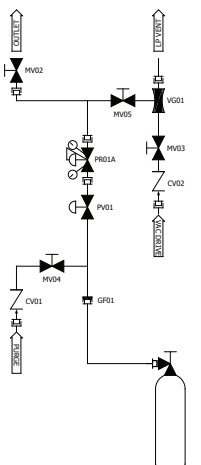
3-Valve



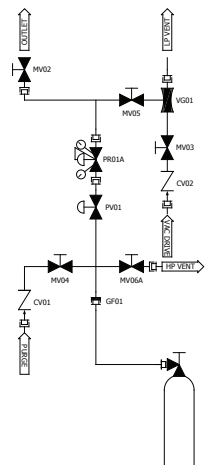
4-Valve



5-Valve



6-Valve



FACILITIES REQUIREMENTS

¹ Pneumatic Supply	Adjustable to 90 psig	1 slm max.
² Process Purge	Adjustable to 85 psig	30 slm max.
³ Vacuum Drive	Adjustable to 85 psig	85 slm max.
⁴ Process Vent	>1.0" WC	100 slm
¹ Power	115V/3A	N/A
Sprinkler [if used]	30 psig	31 gpm
Exhaust	0.15" WC	300 scfm (2-cyl)
	0.15" WC	450 scfm (3-cyl)

¹Needed only with optional FlexPowr™ Controller

²Needed only with 4-Valve, 6-Valve gas panel configurations

³Needed only with 6-Valve gas panel configurations

⁴Needed only with 3, 4, 6-Valve gas panel configurations

⁵Damper must be adjusted to meet 200 fpm face velocity as required by UFC

SDC, A Total Solutions Provider for Your Gas and Chemical Management Needs

1117 Kings Highway

Saugerties, NY 12477

Tel 845.246.3631

Fax 845.246.1595

www.stainlessdesign.com

SDC_FlexGas_4