



## SymplcityY™ UHP Semi-Auto Switchover Panel

### System Features

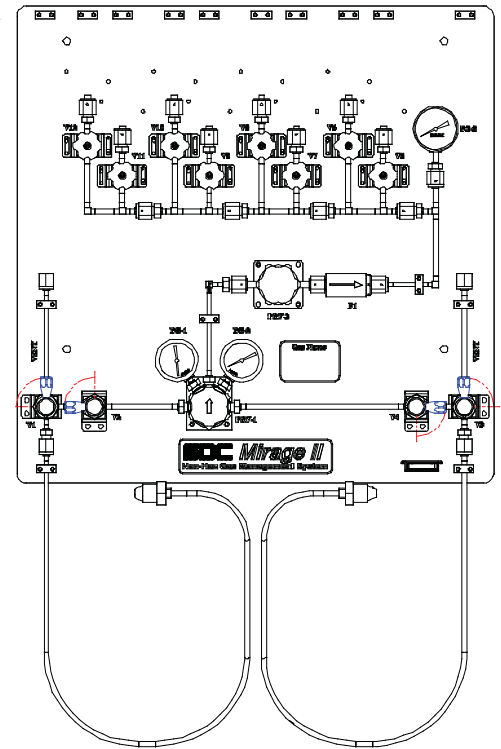
- Scale or pressure based auto - switchover
- Expandable to six (6) points of use
- Primary regulation
- Indicating pressure switches for each cylinder
- Delivery pressure gauge
- Pigtail vent systems purchased without the PURGE/EVAC option
- Vent check valves to prevent back streaming
- Minimized DEAD LEG process gas path
- All UHP/Semiconductor grade components

### Standard Controls Features

- PLC control of all critical functions
- 4-Line backlit LCD character display interface
- Membrane touch-pad user interface
- Proven auto-sequenced routines for all aspects of operations & maintenance
- User settable limits for all process and alarm parameters
- On screen warnings, alarms, prompting and instructions
- EMO and EGO inputs
- Alarm outputs
- Multi-level password protection

The SymplcityY™ UHP Auto-Switchover Panel is an Ultra-high Purity gas panel designed for uninterrupted supply of gas to one or more points-of-use. The heart of this cost-effective panel is the mini-PLC and centrally located 4-Line character display/membrane touch-pad user interface.

When the primary supply container becomes depleted to the Customer settable low pressure limit or low scale reading limit, the Symplcity automatically switches to the standby container. The depleted container can now be replaced without affecting delivery from the new primary container. This



SymplcityY™ with  
AUTO PURGE/EVAC option

automatic feature delivers true zero downtime.

The SymplcityY is available in standard ¼" and HI-FLOW ½" models with a standard ten (10Ra) surface finish.

# Symplicity™ UHP Semi-Auto Switchover Panel

## Standard Source Configurations

- 1-cylinder x 1-cylinder
- 1-dewar x 1-dewar
- 1-dewar x 1-cylinder
- ½" HI-FLOW Model

## Options

- HIGH FLOW model
- Cylinder or dewar scales
- Point-of-use regulation (up to 8)
- Dual stage primary regulator
- Filtration
- 5 and 10 Ra finishes

## Dimensions

- 24" H x 24" W

## Codes and Standards Referenced

- ASME® Section IX
- OSHA® 29 CFR 1910, subparts S and H
- NFPA® 79 Electrical Safety for Industrial Machinery
- SEMI® S2 Safety Guidelines for Semiconductor Manufacturing Equipment
- SEMI® S8-95 Safety Guidelines for Ergonomics/Human Factors Engineering



OEM discounts and private-labeling services available.

Process purity levels are ensured through the use of top quality 316L SS or VIM/VAR tubing and components. All UHP wetted flow paths including purge panels, pigtails and other dynamic pressure bearing components are welded by ASME® Section IX Certified Weld Technicians. SDC's Certified 3rd party Orbital Welding Procedure includes:

- Procedure Qualification of Record
- Welding Procedure Specifications
- Welder Performance Qualifications



Symplicity™ UHP Auto-Switchover Panel with MicroLine™ UHP Manual Gas Panels mounted on a FastRack™.

## FACILITIES REQUIREMENTS

Pneumatic Supply	adjustable to 90 psig	1 slm max.
<sup>1</sup> Process Purge	adjustable to 80 psig	85 slm max.
<sup>1</sup> Vacuum Drive	adjustable to 85 psig	85 slm max.
Process Vent	>1.0"WC	100 slm
Power	115V/3A	N/A

<sup>1</sup>Needed with PURGE/EVAC option only.