



BulkGas™ 1500 Series

Gas Delivery System

Standard Configurations

- 2-Source
 - 2-Source, auto-switchover
 - 2-Source, auto-switchover with purge
- Independent out or auto switchover

Standard Controls / Features

- PLC control of all critical functions
- Bright 10.4" color touch screen interface
- Proven auto-sequenced routines for all aspects of operation & maintenance
- User settable limits for all process and alarm parameters
- Exhaust pressure monitor
- On-screen warning, alarms, prompting and instructions
- SCADA compatible utilizing modbus open protocol
- Emergency Off [EMO]
- EMO & EGO inputs
- Alarm outputs
- Multi-level password protection
- Diagnostics screen
- Valve cycle count screen
- Z-Purge ready for CLASS I DIV II

The BulkGas™ 1500 Gas Delivery System is representative of SDC's continuous drive and commitment to providing the industry's safest and most reliable gas equipment available.

Mass customization and modular design concepts of the gas panels, controls architecture and cabinet enclosure have been combined to widen the product configuration spectrum and greatly increase user flexibility.

From the Fab to the Lab to the University, SDC sets itself apart as the clear choice for value in today's budget conscious environment.



BulkGas™ 1500 Series
Gas Delivery System

Process Panel Features

- Ultra-High-Purity [UHP] 316L or VAR construction
- Surface finish of 10Ra avg. or better
- UHP diaphragm valves
- Application specific regulator
- Precision pressure transducers
- Vacuum assisted purge
- UHP orbitally welded with strategic VCR® breaks
- Helium leak tested to 1×10^{-9} atm*cc/s
- CLASS 100 / CLASS 10 clean room assembled

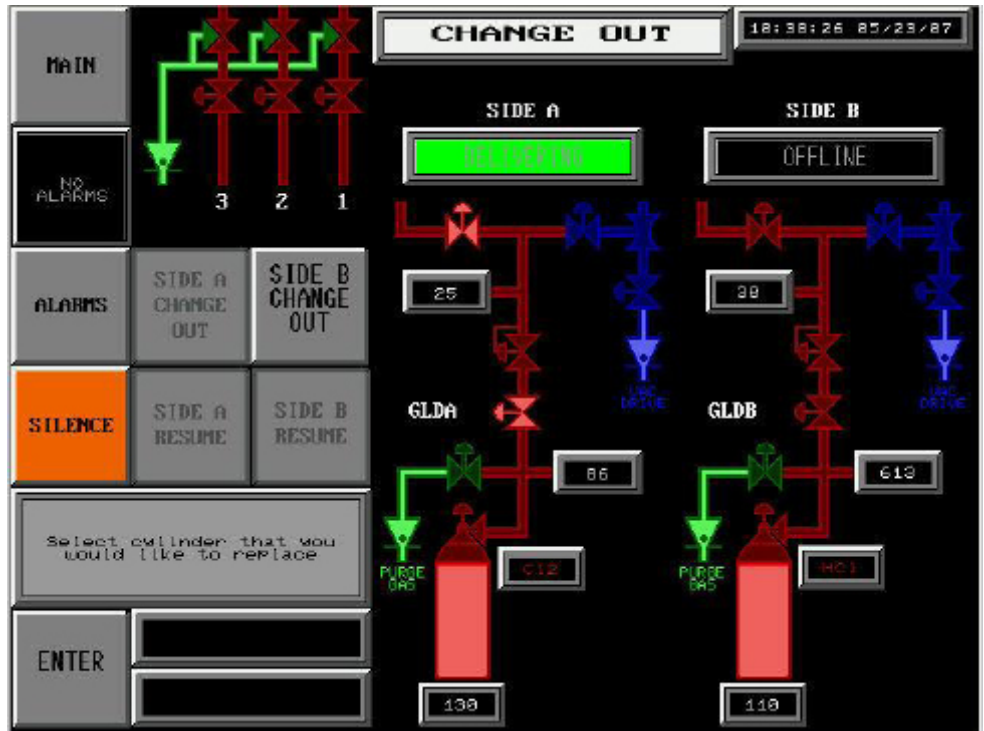
Codes and Standards Referenced

- SEMI® S2
- CE® mark
- ASME Section IX
- Factory Mutual®
- ASMNFPA®79, 496, 70 [NEC]
- UL®



OEM discounts and private-labeling services available.

BulkGas™ 1500 Series Gas Delivery System



Large 10.4" color touch screen interface

Please note that manual and/or semi-automated systems like the BulkGas™ are not recommend for use in ALL applications. SDC recommends that FULLY AUTOMATED SYSTEMS be used for toxics, corrosives, pyrophorics and other highly hazardous gases/liquefied gases.

FACILITIES REQUIREMENTS

CDA	adjustable to 90 psig	1 slm max.
Purge N ₂	adjustable to 85 psig	85 slm max.
Venturi N ₂	adjustable to 60 psig	30 slm max.
Process Vent	>1.0" WC	100 slm
Power	110V, 3A	N/A
Sprinkler [if used]	30 psig	31 gpm
Exhaust	>0.20 H ₂ O	300 scfm

SDC, A Total Solutions Provider for Your Gas and Chemical Management Needs

1117 Kings Highway

Saugerties, NY 12477

Tel 845.246.3631

Fax 845.246.1595

www.stainlessdesign.com

BulkGas_5

© 2016 SDC | All rights reserved