

SDC

FeraGas™ Heated Cylinder Gas Cabinet

Standard Features:

- Eleven (11) gauge cold rolled steel body
- Houses 1 or 2 full size gas cylinders
- High quality, fully seam welded construction
- 1/4" diamond-plate hard deck
- Self-closing, fully gasketed, triple-hinged doors
- Lockable safety latches on doors
- Unistrut® compatible interior mounting rails
- Cylinder clamps with tension straps
- Reflective white, high gloss, powder coat finish

Standard Controls/Features:

- Thermostat temperature control, heat only
- 475W
- Overtemp protection
- Temperature gauge
- Lockable power disconnect
- NEMA 4X controls enclosure

Dimensions

- 2-cyl.: 24"W x 72"H x 19"D

The FeraGas™ is a heated gas cylinder storage cabinet designed to maintain gas enclosure temperatures and prevent temperature swings that may affect your process chemicals. As temperatures dip to dew point and below, heavier gas components can settle at the bottom of the cylinder, while the lighter components accumulate closer to the top. *Stratification* can be minimized by mediating the enclosure temperature. The FeraGas can protect against hydrocarbon dew point and condensation on the interior cylinder wall.

The standard FeraGas enclosure houses cylinders up to 61"H x 12"D. The controls enclosure located at the top of the gas cabinet houses the power disconnect, thermostat controls, temperature gauge and gas delivery pressure gauge (with gas delivery panel options).



Heated, 2-cylinder enclosure

The gas cabinet enclosure utilizes reflective insulation technology to minimize BTU loss and keep cost of operation down.

FeraGas™ Heated Cylinder Gas Cabinet



FeraGas™ interior
(Shown with a custom gas panel)

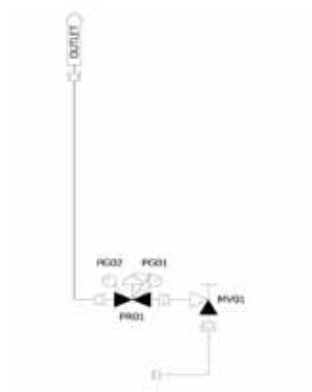
Optional Process Gas Panels:

- All 316LSS components
- UHP orbitally welded w/strategic VCR breaks
- Standard surface finish 25 Ra
- Helium leak tested to 1×10^{-9} atm* cc/s
- CLASS 100/CLASS 10 clean room assembly and test

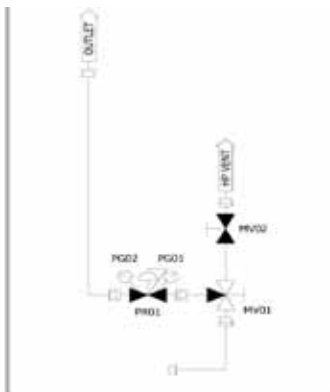
SDC

OEM discounts and private-labeling services available.

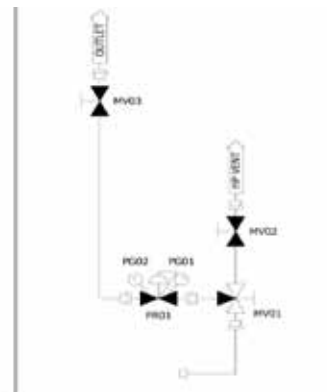
1-Valve



2-Valve



3-Valve



Gas Panel Options:

- 1-Valve: Includes regulator and shut off valve
- 2-Valve: Adds high pressure vent to the 1-Valve
- 3-Valve: Adds outlet shutoff to 2-Valve

Gas Enclosure Options:

- Adjustable Cylinder Shelves
- Plumbing Backplanes
- Custom Cabinet Colors
- Custom Coating
- Custom Labeling and Logos
- 304SS or 316SS Enclosure

FACILITIES REQUIREMENTS

Power	110V/20A	N/A
Sprinkler [if used]	30 psig	31 gpm

SDC, A Total Solutions Provider for Your Gas and Chemical Management Needs

1117 Kings Highway

Saugerties, NY 12477

Tel 845.246.3631

Fax 845.246.1595

www.stainlessdesign.com

FeraGas_7