

SDC

FlexPowr™ ESO Safety Controller

Features:

- 3.8" color touchscreen
- Automatic shutdown of process gas panels
- User-definable outputs
- Audible/visible alarm indication
- EMO button
- Multilevel password protection

Additional Features Include:

- 10 user configurable alarm inputs w/ 20 selectable alarm messages
- 2 user configurable alarm output relays
- Independent and common panel alarms
- Up to 3 onboard valve control solenoids to control external pneumatic valves
- EMO button with "safe break" contacts
- EMO circuit with force-guided latch relay
- Internal CPU watchdog
- SCADA compliant using Modbus TCP

SDC

OEM discounts and private-labeling services available.

The FlexPowr™ is a state-of-the-art, microprocessor controlled, alarm unit designed with safety and flexibility at its core. It monitors alarm inputs to safely shutdown process panels equipped with air operated Emergency Shut-Off (ESO) valves.

The FlexPowr™ can also be configured to control a myriad of process gas panel, valve manifold box (VMB), or valve manifold panel (VMP) configurations.

The FlexPowr™ is designed to control the flow of process gas from any gas panel, VMB or VMP equipped with a pneumatically operated Emergency Shut-Off (ESO) valve. The onboard solenoids control the pneumatic actuation pressure to the ESO valves that shut down in an alarm condition.



FlexPowr™ Panel Mount Controller

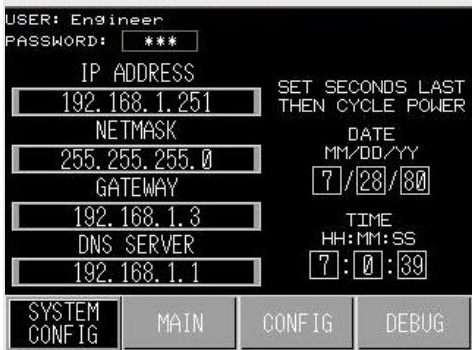
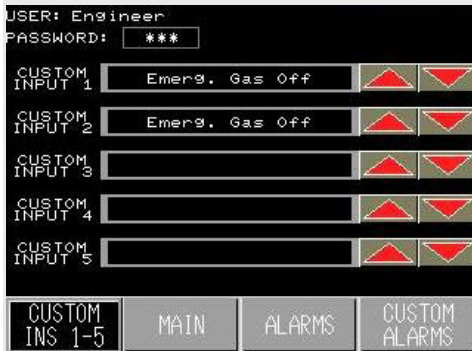
Numerous alarm configuration options allow for maximum flexibility and safety. Exhaust pressure switch, gas leak detection, and UVIR are just some of the optional controls components available to prompt shutdown.

Add safety and peace-of-mind to your process with the optional

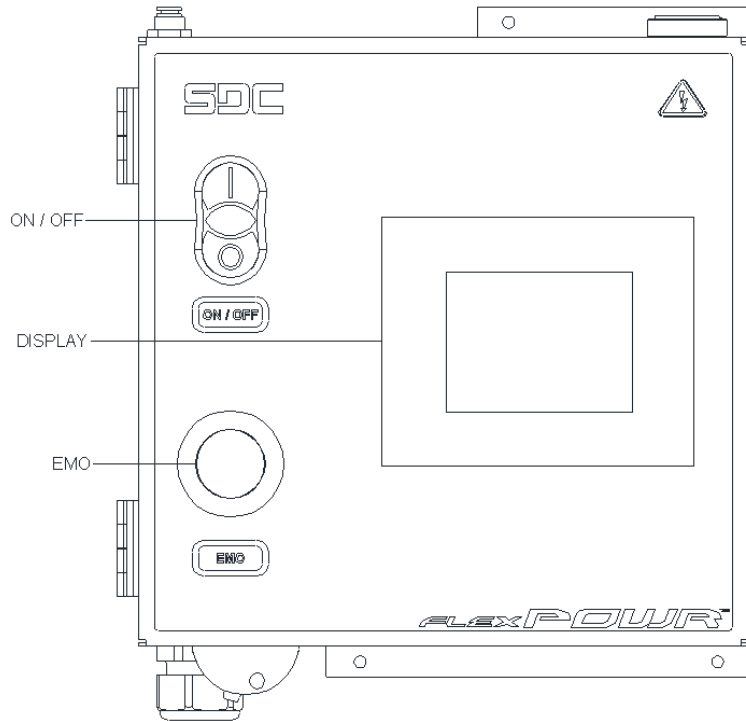
FlexPowr™ Controller.

FlexPowr™ ESO Safety Controller

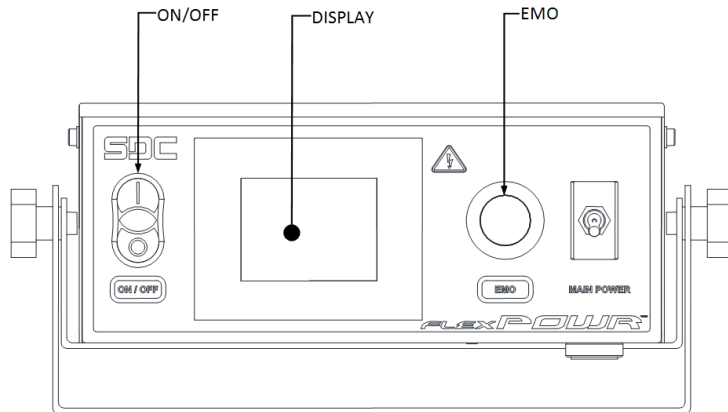
Screenshots of FlexPowr™ Controller



OEM discounts and private-labeling services available.



FlexPowr™ Gas Panel Mount Front Panel Controls



FlexPowr™ Top Mount Front Panel Controls

SDC, A Total Solutions Provider for Your Gas and Chemical Management Needs

1117 Kings Highway

Saugerties, NY 12477

Tel 845.246.3631

Fax 845.246.1595

www.stainlessdesign.com
FlexPowr_Controller_5